



**Government of India
Ministry of Earth Sciences
India Meteorological Department**



Press Release

Date: 20th August, 2025

Time of Issue: 1330 hours IST

Subject: i) Heavy to very heavy rainfall at a few places with isolated Extremely to Exceptionally heavy rainfall (≥ 30 cm) is very likely over Saurashtra & Kutch and south Gujarat region on 20th and over Saurashtra on 21st August, 2025.

ii) Rainfall activity is likely to reduce over Konkan and Madhya Maharashtra from today onwards with isolated heavy to very heavy rainfall over north Konkan (including Mumbai) and isolated very heavy to extremely heavy rainfall (≥ 21 cm) over North Madhya Maharashtra on 20th and isolated heavy rainfall over the region during subsequent 3 days.

iii) Increase in rainfall activity over Northwest & adjoining East India from 22nd August onwards.

Realised weather during past 24 hours till 0830 hours IST of today, the 20th August, 2025:

- ❖ **Heavy to very heavy rainfall at some places with exceptionally heavy falls (≥ 40 cm)** has been recorded at isolated places over Konkan (coastal Maharashtra); **Heavy to very heavy rainfall with exceptionally heavy falls (≥ 55 cm)** at isolated places over Ghat areas of Madhya Maharashtra and **Heavy to very heavy rainfall with extremely heavy rainfall (≥ 55 cm)** at isolated places over Saurashtra.
- ❖ **Very heavy rainfall (12-20 cm)** has been recorded at isolated places over Gujarat Region, north Haryana, Uttarakhand and Coastal Karnataka.
- ❖ **Heavy rainfall (7-11 cm)** has been recorded at isolated places over East Rajasthan, Madhya Pradesh, Himachal Pradesh, North Interior Karnataka, Vidarbha, Telangana, Chhattisgarh, Odisha, Arunachal Pradesh, Assam and Goa.

For more details of realised weather, kindly refer [Annexure I](#).

i. Weather Systems, Forecast and Warnings (refer to Annexure II & III):

- ❖ The Monsoon trough is active and runs south of its normal position. It is likely to shift gradually northwards from tomorrow, the 21st August, 2025 onwards.
- ❖ Yesterday's depression over northwest & adjoining westcentral Bay of Bengal and north Andhra Pradesh - south Odisha coasts moved west-northwestwards and weakened into a well marked low pressure area and lay over central parts of Chhattisgarh & neighbourhood at 1730 hrs IST of today, the 19th August. It further weakened into a low pressure area over central parts of Chhattisgarh and adjoining east Madhya Pradesh at 0530 hrs IST of today and become less marked at 0830 hrs IST of today, the 20th August. However, the associated cyclonic circulation lay over southeast Madhya Pradesh and extends upto 4.5 km above mean sea levels.
- ❖ A **Western Disturbance** lay as a cyclonic circulation over Jammu division at lower tropospheric levels.
- ❖ An **upper air cyclonic circulation** lay over northeast Assam at lower tropospheric levels.
- ❖ An **upper air cyclonic circulation** over northeast Arabian Sea & adjoining Gujarat at middle tropospheric levels.
- ❖ A **shear zone** roughly along Lat. 21°N over the Indian region at lower tropospheric levels.
- ❖ An **off shore trough** at mean sea level runs along Gujarat -Maharashtra coasts.

Under the influence of these systems, the following weather is likely:

West India:

- ❖ **Heavy to very heavy rainfall at a few places with isolated Extremely to Exceptionally heavy rainfall (≥ 30 cm) is very likely over Saurashtra & Kutch and south Gujarat region on 20th and over Saurashtra on 21st August, 2025.**

- ❖ **Rainfall activity is likely to reduce over Konkan and Madhya Maharashtra from today onwards with isolated heavy to very heavy rainfall over north Konkan (including Mumbai) and isolated very heavy to extremely heavy rainfall (≥ 21 cm) over North Madhya Maharashtra on 20th and isolated heavy rainfall over the region during subsequent 3 days.**
- ❖ Strong surface winds (speed reaching 40-50 kmph) very likely over the region till 23rd August.
- ❖ Light to moderate rainfall at most/many places very likely over the region during next 7 days.
- ❖ Increase in rainfall activity over Konkan and Madhya Maharashtra and adjoining Gujarat from 25th Onwards.

East & Central India:

- ❖ Isolated **heavy rainfall** likely over Madhya Pradesh, Chhattisgarh, Sub-Himalayan West Bengal & Sikkim, Bihar during next 7 days; Vidarbha on 20th, 25th & 26th; Odisha, Jharkhand, Gangetic West Bengal during 21st-25th August with isolated **very heavy rainfall over south Madhya Pradesh on 20th; Jharkhand on 22nd; Bihar on 22nd & 23rd and Chhattisgarh on 25th & 26th August.**
- ❖ Light to moderate rainfall at most/many places accompanied with thunderstorm & lightning likely over the region during next 5 days.

Northwest India:

- ❖ Isolated **heavy rainfall** likely over Jammu-Kashmir during 22nd-26th; Himachal Pradesh, Uttarakhand, East Rajasthan during next 7 days; Punjab, Haryana on 20th, during 22nd-26th; East Uttar Pradesh during 22nd-25th; West Uttar Pradesh during 23rd-26th; West Rajasthan on 23rd & 24th August with **isolated very heavy rainfall over Punjab on 20th and 23rd; over Uttarakhand, Himachal Pradesh during 23rd-25th; Haryana and East Rajasthan on 23rd August.**
- ❖ Light/moderate rainfall at most/many places accompanied with thunderstorm & lightning likely over Jammu-Kashmir-Ladakh-Gilgit-Baltistan-Muzaffarabad, Uttarakhand & Rajasthan during next 7 days.

Northeast India:

- ❖ Isolated **heavy rainfall** likely to continue over Assam & Meghalaya, Nagaland, Manipur, Mizoram & Tripura, Arunachal Pradesh during 7 days with **very heavy rainfall over Arunachal Pradesh, Tripura, Mizoram during 21st-24th and Assam & Meghalaya during 20th-23rd August.**
- ❖ Light/moderate rainfall at many places accompanied with thunderstorm & lightning likely during next 3 days.

South Peninsular India:

- ❖ Isolated **heavy rainfall** likely over Coastal & North Interior Karnataka on 20th & 26th; Telangana on 20th, 25th & 26th; Coastal Andhra Pradesh on 26th August.
- ❖ Strong surface winds (speed reaching 40-50 kmph) very likely over north Coastal Andhra Pradesh and Coastal Karnataka on 20th August.
- ❖ Light to moderate rainfall at most/many places accompanied with thunderstorm & lightning likely over Tamil Nadu, Coastal Andhra Pradesh & Yanam and Telangana during next 5 days.

Fishermen warning:

Fishermen are advised not to venture into the following from 20th August to 25th August 2025 to the following Areas:

Arabian Sea:

Over central Arabian Sea & adjoining, some parts of south Arabian Sea; many parts of northeast Arabian Sea; along and off Gujarat, Konkan, Goa coasts during 20th to 25th August; North Karnataka coast on 20st; Along and off the Somalia, Yemen, Oman coasts and adjoining sea areas during 20th to 24th August.

Bay of Bengal:

Over some parts north and adjoining few parts of westcentral Bay of Bengal during 20th to 25th August; along and off North Andhra Pradesh on 20th and off north Andhra Pradesh coasts on 21st to 23rd August; along and of north Odisha-West Bengal and Bangladesh coasts on 20th, 23rd, 24th August.

Over Gulf of Mannar adjoining Comorin area during 20th to 22nd August.

ii. Weather conditions and forecast over Delhi/NCR during 20th to 23rd August, 2025 (Annexure IV)

For more details, kindly refer National Weather Bulletin:

https://mausam.imd.gov.in/responsive/all_india_forecast_bulletin.php

For District wise warnings refer: <https://mausam.imd.gov.in/responsive/districtWiseWarningGIS.php>

For Fishermen warning refer <https://rsmcnewdelhi.imd.gov.in/fishermen-warning.php>

Rainfall recorded (in cm) during past 24 hours till 0830 hours IST of today, the 20th August:

Madhya Maharashtra: Tamini (Pune) – 57; Lonavala ARG (dist Pune) 43; Mahabaleshwar (dist Satara) 30; Radhanagari (dist Kolhapur), Gaganbawada (dist Kolhapur) 17 Each; Igatpuri (dist Nashik) 16; Vadgaon Maval (dist Pune) 15; Shahuwadi (dist Kolhapur) 12; Ozharkheda - Fmo (dist Nashik), Velhe (dist Pune) 10 Each; Talegaon AWS (dist Pune), Chinchwad - ARG (dist Pune), Trimbakshwar (dist Nashik), Harsul - Fmo (dist Nashik), Gargoti/bhudargad (dist Kolhapur) 9 Each; Paud Mulshi (dist Pune), Ambegaon Ghodegaon (dist Pune), Junnar (dist Pune) 8 Each; Bhore (dist Pune) 7;

Konkan & Goa: Matheran (dist Raigad) 44; Panvel ARG (dist Raigad), Karjat ARG (dist Raigad), Bhiwandi (dist Thane) 23 Each; Thane (dist Thane), Vikramgad (dist Palghar), Tala (dist Raigad), Savarde-arg (dist Ratnagiri) 22 Each; Santacruz (dist Mumbai Suburban), Pen (dist Raigad), Vasai (dist Palghar) 21 Each; Wada (dist Palghar) 20; Tbia IMD Part Time (dist Thane), Jawhar (dist Palghar), Khalapur (dist Raigad), Palghar ARG (dist Palghar) 19 Each; Sudhagad Pali (dist Raigad), Mhasla (dist Raigad) 18 Each; Talasari (dist Palghar), Ambernath (dist Thane), Poladpur (dist Raigad) 17 Each; Mokheda - Fmo (dist Palghar) 16; Roha (dist Raigad), Sangameshwar Devrukh (dist Ratnagiri), Dahanu (dist Palghar) 15 Each; Mangaon (dist Raigad), Mandangad (dist Ratnagiri), Chiplun (dist Ratnagiri), Kalyan (dist Thane), Vaibhavwadi (dist Sindhudurg) 14 Each; Shahapur (dist Thane), Murbad (dist Thane), Khed (dist Ratnagiri), Uran (dist Raigad), Dapoli ARG (dist Ratnagiri) 13 Each; Guhagarh (dist Ratnagiri), Ulhasnagar (dist Thane) 12 Each; Murud (dist Raigad), Colaba (dist Mumbai City), Kudal (dist Sindhudurg), Mulde ARG (dist Sindhudurg), Mahad (dist Raigad), Wakwali ARG (dist Ratnagiri), Kankavli (dist Sindhudurg) 11 Each; Ratnagiri (dist Ratnagiri), Rajapur (dist Ratnagiri) 10 Each; Sawantwadi (dist Sindhudurg), Awalegaon - ARG (dist Sindhudurg), Quepem (dist South Goa) 9 Each; Shriwardhan (dist Raigad), Ponda (dist North Goa), Devgad (dist Sindhudurg) 8 Each; Harnai IMD (dist Ratnagiri), Malvan (dist Sindhudurg), Pernem (dist North Goa), Dabolim N.a.s.- Navy (dist South Goa), Lanja (dist Ratnagiri) 7 Each;

Saurashtra & Kutch: Kalyanpur (dist Devbhoomi Dwarka) 26; Dwarka (dist Devbhoomi Dwarka) 20; Porbandar (dist Porbandar) 17; Sutrapada (dist Gir Somnath) 13; Diu (dist Diu), Jafrabad (dist Amreli) 11 Each; Rajula (dist Amreli), Talala (dist Gir Somnath), Una (dist Gir Somnath) 10 Each; Mahuva(b) (dist Bhavnagar), Kodinar (dist Gir Somnath) 9 Each; Gir Gadhada (dist Gir Somnath) 8; Mendarda (dist Junagadh), Vanthali (dist Junagadh), Veraval (dist Gir Somnath) 7 Each;

Gujarat Region: Khanvel (dist Dadara & Nagar Haveli) 17; Madhbun (dist Dadara & Nagar Haveli) 10; Daman (dist Daman), Umargam (dist Valsad) 8 Each; Vapi (dist Valsad), Silvassa (dist Dadara & Nagar Haveli), Daman Fmo (dist Daman) 7 Each;

Coastal Karnataka: Castle Rock (dist Uttara Kannada) 16; Jagalbet (dist Uttara Kannada) 8; Yellapur (dist Uttara Kannada) 7;

Uttarakhand: Uttar Kashi (CWC) (dist Uttarkashi), Uttar Kashi (dist Uttarkashi) 13 Each; Loharkhet (dist Bageshwar) 9; Ranikhet (g) (dist Almora), Dharchula (dist Pithoragarh) 8 Each;

Haryana: Morni (dist Panchkula) 12;

West Madhya Pradesh: Kannod (dist Dewas) 11; Indore (dist Indore), Bhimpur (dist Betul) 8 Each; Raisen-aws (dist Raisen), Shajapur (dist Shajapur) 7 Each;

East Rajasthan: Sajjangarh SR (dist Banswara), Loharia (dist Banswara) 10 Each; Garhi (dist Banswara) 7;

Vidarbha: Bhamragad (dist Gadchiroli), Gondia AP (dist Gondia) 8 Each;

East Madhya Pradesh: Paraswada (dist Balaghat), Keolari (dist Seoni), Baihar (dist Balaghat), Kirnapur (dist Balaghat) 8 Each;

Chhattisgarh: Bhanupratappur (dist Kanker), Durgkondal (dist Kanker) 8 Each; Gobra Nawapara (dist Raipur) 7;

Telangana: Palawancha (dist B. Kothagudem), Kothagudem (dist B. Kothagudem), Yellandu (dist B. Kothagudem) 7 Each;

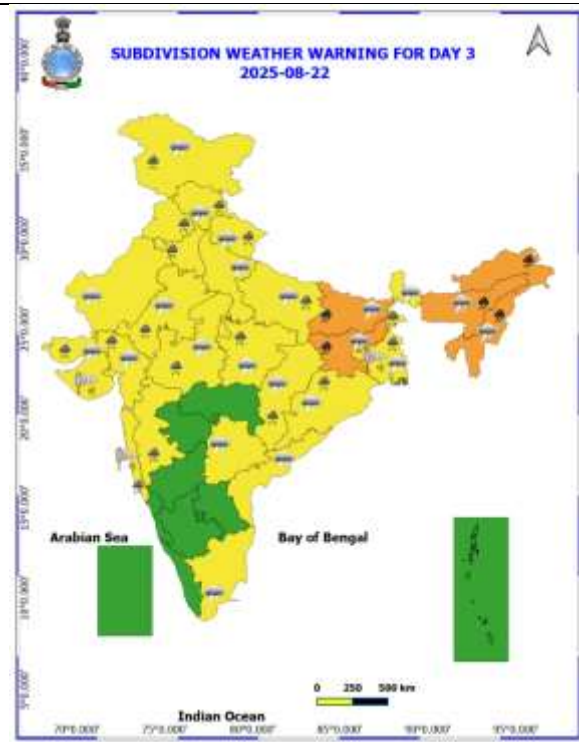
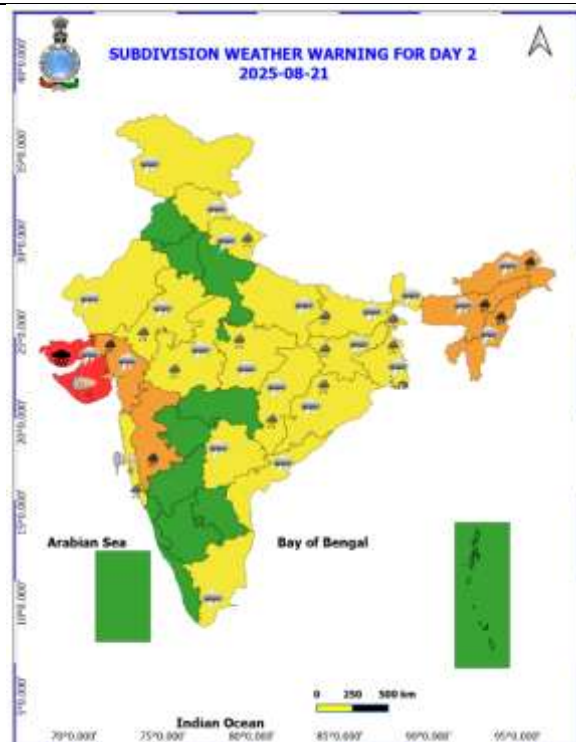
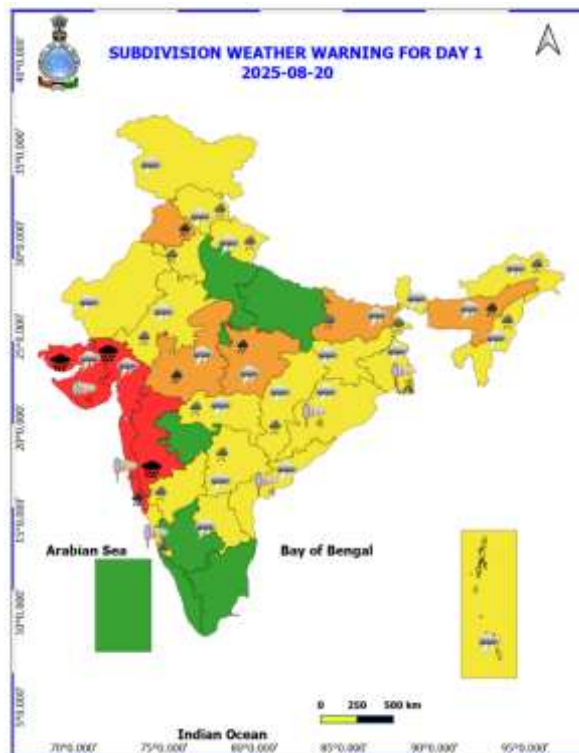
North Interior Karnataka: Londa (dist Belagavi) 7;

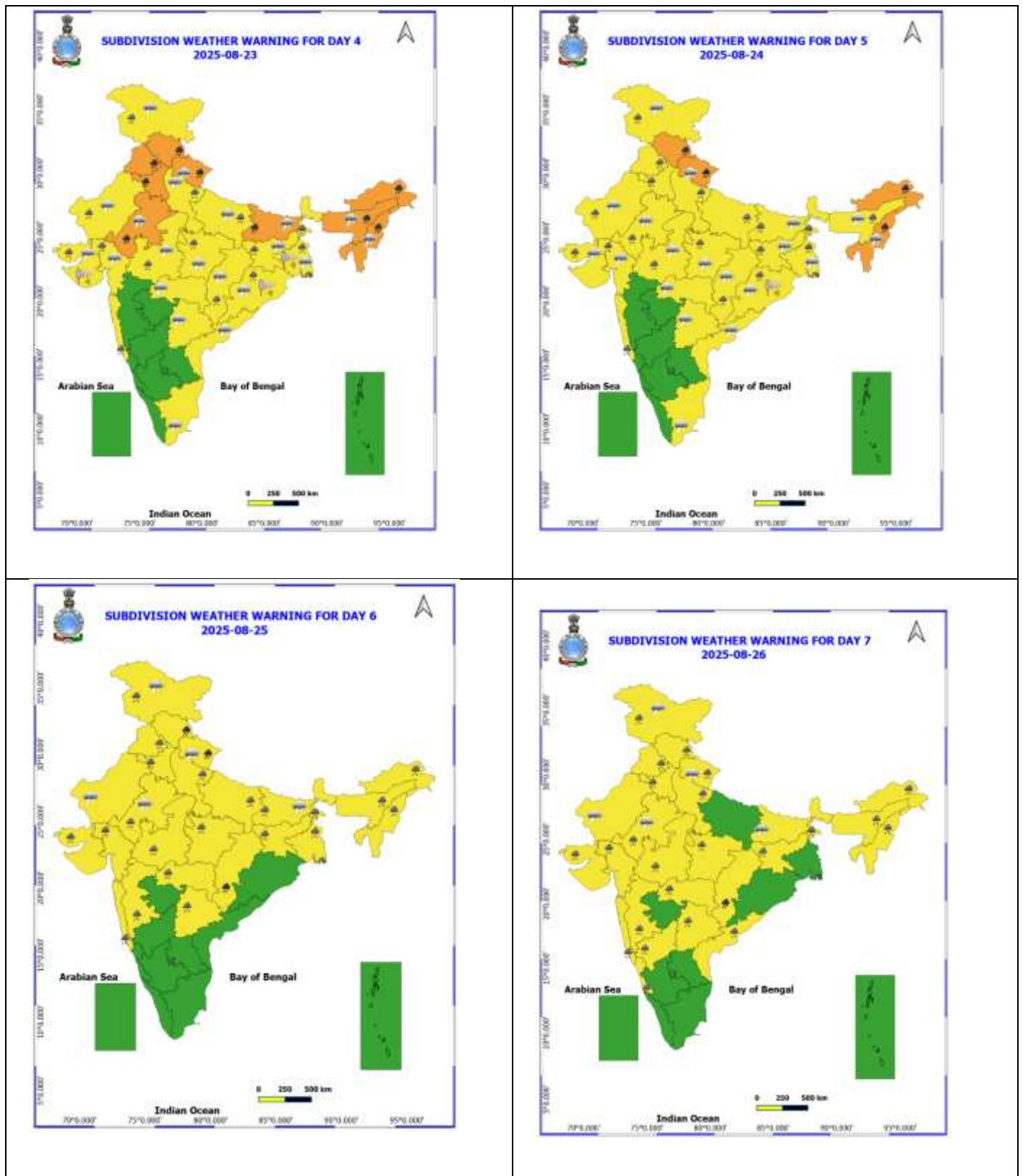
Himachal Pradesh: Bharwain (dist Una) 7;

Assam: Dhubri CWC (dist Dhubri) 7

Table-1								
7 Days Rainfall Forecast								
S.No.	Subdivision	20- Aug	21- Aug	22- Aug	23- Aug	24- Aug	25- Aug	26- Aug
		Day 1	Day 2	Day 3	Day 4	Day 5	Day 6	Day 7
1	ANDAMAN & NICOBAR ISLANDS	WS	WS	WS	WS	FWS	FWS	FWS
2	ARUNACHAL PRADESH	FWS	WS	WS	WS	FWS	FWS	FWS
3	ASSAM & MEHGHALAYA	WS	WS	WS	WS	WS	FWS	FWS
4	NAGALAND, MANIPUR, MIZORAM AND TRIPURA	FWS	FWS	WS	WS	WS	FWS	FWS
5	SUB HIMALAYAN WEST BENGAL & SIKKIM	FWS	FWS	FWS	SCT	SCT	FWS	FWS
6	GANGETIC WEST BENGAL	WS	WS	WS	WS	WS	WS	WS
7	ODISHA	FWS	FWS	FWS	FWS	FWS	FWS	FWS
8	JHARKHAND	WS	WS	WS	WS	WS	WS	WS
9	BIHAR	FWS	FWS	WS	WS	WS	FWS	SCT
10	EAST UTTAR PRADESH	ISOL	FWS	WS	WS	WS	FWS	FWS
11	WEST UTTAR PRADESH	ISOL	SCT	FWS	FWS	WS	WS	FWS
12	UTTARAKHAND	WS	FWS	WS	WS	WS	WS	FWS
13	HARYANA, CHANDIGARH & DELHI	SCT	SCT	FWS	WS	WS	WS	FWS
14	PUNJAB	SCT	ISOL	FWS	WS	WS	WS	FWS
15	HIMACHAL PRADESH	FWS	SCT	FWS	WS	WS	WS	WS
16	JAMMU AND KASHMIR AND LADAKH	SCT	ISOL	SCT	WS	WS	SCT	FWS
17	WEST RAJASTHAN	ISOL	SCT	SCT	SCT	SCT	SCT	SCT
18	EAST RAJASTHAN	FWS	FWS	FWS	FWS	FWS	FWS	FWS
19	WEST MADHYA PRADESH	WS	WS	FWS	FWS	WS	WS	WS
20	EAST MADHYA PRADESH	WS	FWS	FWS	WS	WS	WS	WS
21	GUJRAT REGION	WS	WS	WS	WS	WS	WS	WS
22	SAURASHTRA & KUTCH	WS	WS	WS	WS	WS	FWS	FWS
23	KONKAN & GOA	WS	WS	WS	WS	WS	WS	WS
24	MADHYA MAHARASHTRA	FWS	SCT	ISOL	ISOL	ISOL	ISOL	SCT
25	MARATHWADA	ISOL	ISOL	ISOL	ISOL	ISOL	ISOL	SCT
26	VIDARBHA	FWS	FWS	SCT	SCT	FWS	FWS	WS
27	CHHATTISGARH	FWS	FWS	FWS	FWS	FWS	WS	WS
28	COASTAL ANDHRA PRADESH	SCT	ISOL	ISOL	ISOL	ISOL	SCT	SCT
29	TELANGANA	FWS	SCT	ISOL	ISOL	ISOL	FWS	FWS
30	RAYALASEEMA	ISOL	ISOL	ISOL	ISOL	ISOL	ISOL	ISOL
31	TAMILNADU & PUDUCHERRY	ISOL	ISOL	SCT	SCT	ISOL	ISOL	ISOL
32	COSTAL KARNATAKA	WS	WS	FWS	FWS	FWS	FWS	WS
33	NORTH INTERIOR KARNATAKA	FWS	SCT	SCT	SCT	ISOL	SCT	FWS
34	SOUTH INTERIOR KARNATAKA	SCT	SCT	SCT	SCT	ISOL	ISOL	SCT
35	KERALA AND MAHE	FWS	SCT	SCT	SCT	SCT	FWS	FWS
36	LAKSHADWEEP	SCT	SCT	SCT	SCT	SCT	SCT	SCT

- As the lead period increases forecast accuracy decrease.





- Action may be taken based on ORANGE AND REDCOLOUR warnings.
- Vulnerable regions likely urban and hilly areas action may be initiated for heavy rainfall warning.
- As the lead period increases forecast accuracy decreases.

Detailed districtwise Multi Hazard weather warning for next five days available at <https://mausam.imd.gov.in/responsive/districtWiseWarningGIS.php>

Weather forecast over Delhi/NCR during 20th August to 23th August 2025**Past Weather:**

Minimum temperatures and Maximum temperatures showed no significant change during the past 24 hours over Delhi. Minimum temperatures ranged between 25–27 °C and maximum temperatures between 34–35 °C, both remaining near normal for the region. North easterly winds prevailed with wind speed upto 28 kmph gusting to 46 kmph, and NCMRWF Noida station recorded the highest rainfall of 54 mm in past 24 hours over Delhi NCR region. Partly cloudy sky conditions and northeasterly winds of 10-15 kmph prevailed over the region in the forenoon today.

Weather Forecast:

20.08.2025: Partly cloudy sky. Possibility of one or two spells of very light to light rain/thundershowers during afternoon/evening at isolated places. The maximum temperatures over Delhi are likely to be in the range of 32 to 34°C. The maximum temperature will be below normal upto 0 to 2°C. The predominant surface wind will likely be from the southeast direction with a wind speed of upto 10-15 kmph during afternoon, evening and night.

21.08.2025: Generally cloudy sky. Possibility of very light to light rain/ thundershowers. The maximum and minimum temperatures over Delhi are likely to be in the range of 32 to 34°C and 23 to 25 °C respectively. The minimum temperature will be below normal up to 1 to 3°C and the maximum temperature will be below normal upto 0 to 2°C. The predominant surface wind will likely to be from the east direction with a wind speed of upto 10-15 kmph during morning and 05-10 kmph from the southeast direction during afternoon, evening and night.

22.08.2025: Generally cloudy sky. Possibility of very light to light rain/ thundershowers. The maximum and minimum temperatures over Delhi are likely to be in the range of 31 to 33°C and 22 to 24°C respectively. The minimum temperature will be below normal up to 2 to 4°C and the maximum temperature will be below normal up to 1 to 3°C. The predominant surface wind will likely to be from the southeast direction with a wind speed of upto 05-10 kmph during morning, afternoon and during evening and night.

23.08.2025: Generally cloudy sky. Possibility of light to moderate rain/thundershowers. The maximum and minimum temperatures over Delhi are likely to be in the range of 30 to 32°C and 21 to 23°C respectively. The minimum temperature will be below normal up to 3 to 5°C and the maximum temperature will be below normal up to 2 to 4°C. The predominant surface wind will likely to be from the southeast direction with a wind speed of 10-15 kmph during morning and afternoon hours. It will gradually decrease upto 05-10 kmph from the southeast direction during evening and night.

Impact & Action Suggested due to

- ❖ **Extremely to Exceptionally heavy rainfall (≥ 30 cm) very likely over Saurashtra, Kutch and South Gujarat region on 20th August and over Saurashtra on 21st August.**
- ❖ **Extremely heavy rainfall** very likely at isolated places over North Madya Maharashtra on 20th August.
- ❖ Isolated **very heavy rainfall** likely to continue over **Konkan (including Mumbai) & Goa, south Madhya Pradesh on 20th**; Madhya Maharashtra on 21st; Gujarat State during 20th-22nd; Jharkhand on 22nd; Bihar on 22nd & 23rd; Chhattisgarh on 25th & 26th; Uttarakhand, Himachal Pradesh during 23rd-25th; Punjab, Haryana, East Rajasthan on 23rd; Arunachal Pradesh, Tripura, Mizoram during 21st-24th and Assam & Meghalaya during 20th-23rd August.

Impact Expected

- Localized Flooding of roads, water logging in low lying areas and closure of underpasses mainly in urban areas of the above region.
- Occasional reduction in visibility due to heavy rainfall.
- Disruption of traffic in major cities due to water logging in roads leading to increased travel time.
- Minor damage to kutcha roads.
- Possibilities of damage to vulnerable structure.
- Localized Landslides/Mudslides/landslips/mudslips/landsinks/mudsinks.
- Damage to horticulture and standing crops in some areas due to inundation.
- It may lead to riverine flooding in some river catchments (for riverine flooding please visit Web page of CWC)

Action Suggested

- Check for traffic congestion on your route before leaving for your destination.
- Follow any traffic advisories that are issued in this regard.
- Avoid going to areas that face the water logging problems often.
- Avoid staying in vulnerable structure.

Agromet advisories for likely impact of Heavy / Heavy to Very Heavy Rainfall

- In **Maharashtra**, make arrangements to drain out excess water from rice fields maintaining 2.5 to 5 cm water level in **Konkan** and **ghat areas** of **Madhya Maharashtra**. To prevent waterlogging, make provision for draining out excess water from fields of finger millet, turmeric, groundnut, vegetables and fruit orchards in **Konkan**; maize, groundnut, soybean, vegetables and fruit orchards in **ghat areas** of **Madhya Maharashtra**; soybean and cotton in **West Vidarbha** and rice, soybean, cotton, pigeon pea, vegetables and fruit orchards in **East Vidarbha**.
- In **Gujarat**, provide mechanical support to horticultural crops and staking or support to vegetables and young fruit plants to avoid lodging due to heavy rains and strong surface winds. Make arrangements to drain out excess water from fields of rice, sugarcane, vegetables and tuber crops in **South Gujarat Heavy Rainfall Zone**; rice, cotton, sugarcane and pigeon pea in **South Gujarat Zone**; groundnut, cotton, soybean, black gram, green gram, sesame and pigeon pea in **South Saurashtra Zone**; groundnut, cotton and sesame in **North Saurashtra Zone** and rice, cotton, green gram, black gram, pigeon pea, pearl millet and vegetables in **Bhal and Coastal Zone**.
- In **Madhya Pradesh**, provide adequate drainage in fields of maize, soybean, cotton and vegetables in **Satpura Plateau Zone**; soybean, maize and vegetables in **Malwa Plateau Zone**; rice, soybean, maize, sugarcane and vegetables in **Central Narmada Valley Zone**; soybean, pigeon pea, cotton and vegetables in **Nimar Valley Zone** and maize, soybean, black gram, cotton, and pigeon pea in **Vindhyan Plateau Zone**.
- In **Chhattisgarh**, drain out excess water from fields of *kharif* maize, rice, minor millets, pulses and vegetables in **Bastar Plateau Zone**.
- In **Karnataka**, provide adequate drainage facilities in rice and ginger fields, and plantations of arecanut, coconut and banana in **Coastal Zone**; fields of rice, maize, cotton, ginger and plantations of arecanut in **Hill Zone** and fields of rice, maize and plantations of arecanut and coconut in **Southern Transition Zone**.
- In **Telangana**, drain out excess water from fields of rice, cotton, maize, soybean, pigeon pea, turmeric and vegetables in **Northern Telangana Zone** and rice, cotton, soybean, vegetables and vegetable nurseries in **Southern Telangana Zone**.
- In **Himachal Pradesh**, maintain proper drainage channels in ginger, turmeric and maize fields in **Mid Hills Sub Humid Zone** and rice, maize and vegetable fields in **Sub Montane and Low Hills Sub Tropical Zone**. In **High Hills Sub Temperate Wet Zone**, harvest ripened tomatoes and ensure proper drainage in maize, kidney bean, vegetables and orchards.

- In **Uttarakhand**, maintain proper drainage channels in fields of soybean, maize, pulses, finger millet, ginger, vegetable fields and fruit orchards in **Hill Zone**; barnyard millet, finger millet and already sown green gram in **Sub Humid Sub Tropic Zone**. Ensure proper drainage in rice, maize, soybean, green gram, and vegetables in Nainital district.
- In **Punjab**, maintain proper drainage in chilli fields and remove stagnant rainwater immediately after rainfall in **Undulating Plain Zone**. In **Sub-Montane Undulating Zone**, ensure proper drainage in sugarcane maize, soybean and green gram.
- In **Bihar**, ensure proper drainage from standing crops such as pigeon pea, turmeric, yam, sunflower and maize as well as from vegetable nurseries in **South Bihar Alluvial Zone**.
- In **Assam**, provide mechanical support to orchards and staking in vegetables. Harvest all the matured vegetables (tomato, cucumber, brinjal etc) at the earliest in **Hill Zone**.
- In **Meghalaya**, maintain proper drainage in the field of ginger, vegetable crops and orchards. Provide support (staking) to banana plants to prevent lodging. Maintain a thin 2-3 cm layer of stagnant water in rice fields after transplanting.
- In **Arunachal Pradesh**, ensure proper drainage in rice fields and maintain 5-7 cm water level. Maintain drainage channels in finger millet, banana and vegetable fields. Strengthen the bunds in millet fields to prevent erosion and seedling washout.

Livestock / Fishery

- Keep the animals inside the shed during heavy rainfall and provide them balanced feed.
- Store feed and fodder in a safe place to prevent spoilage.
- Construct an outlet with proper netting around the ponds to drain out excess water, thereby preventing fish from escaping in case of overflow.

Agromet advisories for likely impact of Thunderstorm / Gusty Winds / Squally Winds

(Based on the IBF and advisories issued by different AMFUs)

- Provide mechanical support to horticultural crops and staking or support to vegetables and young fruit plants / fruit-bearing plants to avoid lodging due to strong winds.

Flash flood guidance:

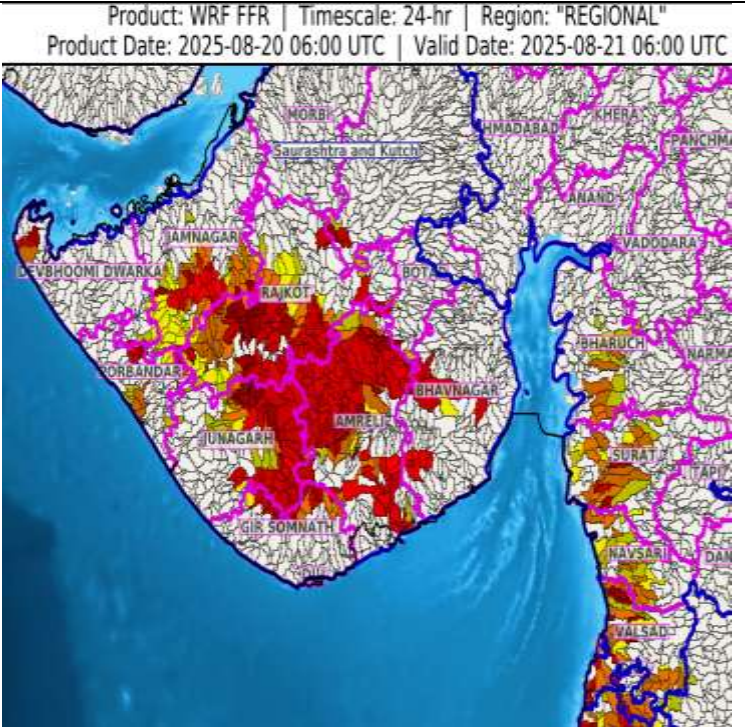
24 hours Outlook for the Flash Flood Risk (FFR) till 1130 IST of 21-08-2025 :

Moderate to High flash flood risk likely over few watersheds & neighbourhoods of following Met Sub-divisions during next 24 hours.

Gujarat Region - Dadar & Nagar Haveli, Daman, Bharuch, Navsari, Surat and Valsad districts.

Saurashtra & Kutch - Amreli, Bhavnagar, Botad, Devbhoomi Dwarka, Diu, Gir Somnath, Jamnagar, Junagarh, Porbandar, Rajkot, Surendranagar and Morbi districts.

Surface runoff/ Inundation may occur at some fully saturated soils & low-lying areas over Area of Concern (AoC) as shown in map due to expected rainfall occurrence in next 24 hours.



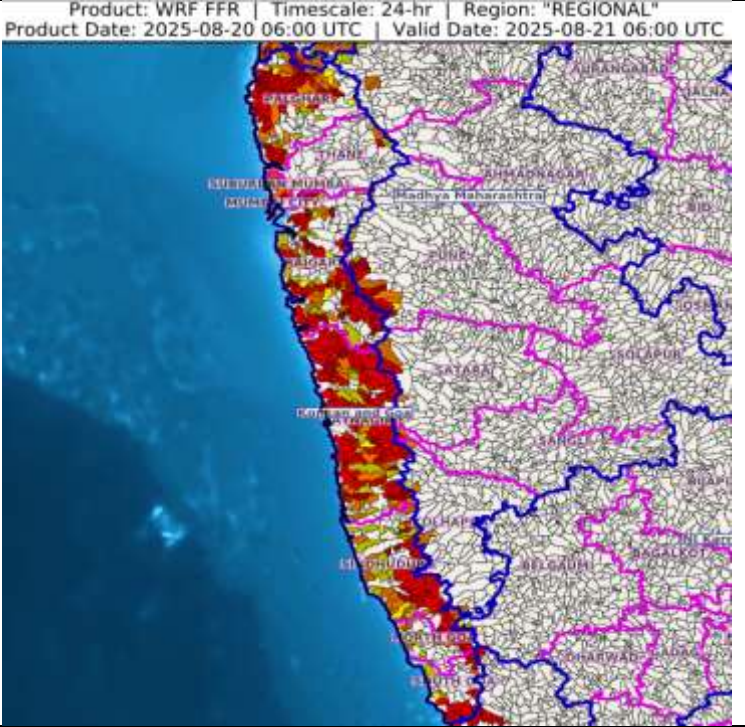
24 hours Outlook for the Flash Flood Risk (FFR) till 1130 IST of 21-08-2025 :

Low to Moderate flash flood risk likely over few watersheds & neighbourhoods of following Met Sub-divisions during next 24 hours.

Konkan & Goa - North Goa, South Goa, Mumbai City, Palghar, Raigarh, Ratnagiri, Sindhudurg, Suburban Mumbai and Thane districts.

Madhya Maharashtra - Kolhapur, Nasik, Pune, Sangli and Satara districts.

Surface runoff/ Inundation may occur at some fully saturated soils & low-lying areas over Area of Concern (AoC) as shown in map due to expected rainfall occurrence in next 24 hours.

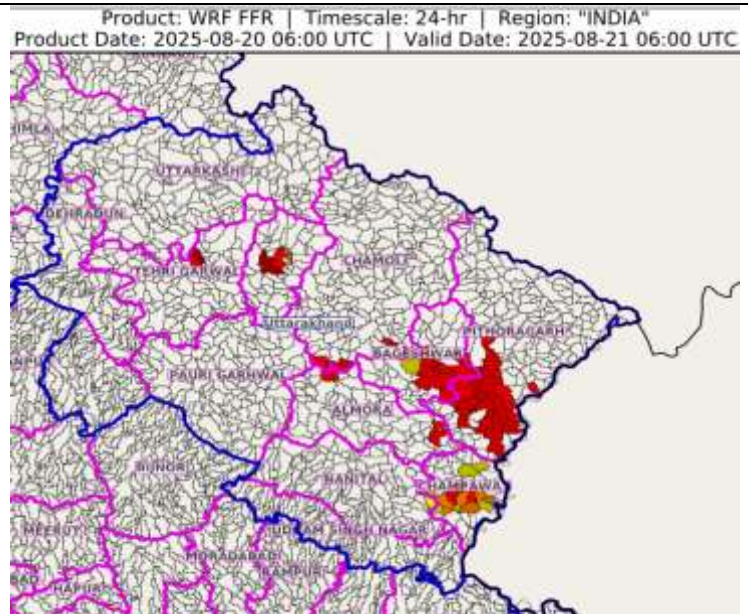


24 hours Outlook for the Flash Flood Risk (FFR) till 1130 IST of 21-08-2025 :

Low to Moderate flash flood risk likely over few watersheds & neighbourhoods of following Met Sub-divisions during next 24 hours.

Uttarakhand - Almora, Bageshwar, Chamoli, Champawat, Pithoragarh, Rudrapur and Tehri Garwal districts.

Surface runoff/ Inundation may occur at some fully saturated soils & low-lying areas over Area of Concern (AoC) as shown in map due to expected rainfall occurrence in next 24 hours.



Legends & abbreviations:

- ❖ **Heavy Rain:**64.5-115.5mm; **Very Heavy Rain:**115.6-204.4mm; **Extremely Heavy Rain:** >204.4mm.
- ❖ **Obsy:** Observatory; Automatic Weather Station; **ARG:** Automatic Rain Gauge; **dist:** District; **NH:** National Highway; **KVK:** Krishi Vigyan Kendra; **DVC:** Damodar Valley Corporation; **PTO:** Part Time Office, **Aero:** Aerodrome, **IAF:** Indian Air Force.
- ❖ **Region wise classification of meteorological Sub-Divisions:**
 - **Northwest India:** Western Himalayan Region (Jammu-Kashmir-Ladakh-Gilgit-Baltistan-Muzaffarabad, Himachal Pradesh and Uttarakhand); Punjab, Haryana-Chandigarh-Delhi; West Uttar Pradesh, East Uttar Pradesh, West Rajasthan and East Rajasthan.
 - **Central India:** West Madhya Pradesh, East Madhya Pradesh, Vidarbha and Chhattisgarh.
 - **East India:** Bihar, Jharkhand, Sub-Himalayan West Bengal & Sikkim; Gangetic West Bengal, Odisha and Andaman & Nicobar Islands.
 - **Northeast India:** Arunachal Pradesh, Assam & Meghalaya and Nagaland, Manipur, Mizoram & Tripura.
 - **West India:** Gujarat Region, Saurashtra & Kutch, Konkan & Goa, Madhya Maharashtra and Marathawada.
 - **South India:** Coastal Andhra Pradesh & Yanam, Telangana, Rayalaseema, Coastal Karnataka, North Interior Karnataka, South Interior Karnataka, Kerala & Mahe, Tamil Nadu, Puducherry & Karaikal and Lakshadweep.

LEGENDS

1. अंडमान और निकोबार द्वीपसमूह

2. अरुणाचल प्रदेश

3. असम और मेघालय

4. नागालैंड, मणिपुर, मिजोरम और त्रिपुरा

5. उप-हिमालयी पश्चिम बंगाल और सिक्किम

6. गंगीय पश्चिम बंगाल

7. ओडिशा

8. झारखंड

9. बिहार

10. पूर्वी उत्तर प्रदेश

11. पश्चिम उत्तर प्रदेश

12. उत्तराखंड

13. हरियाणा, चंडीगढ़ और दिल्ली

14. पंजाब

15. हिमाचल प्रदेश

16. जम्मू और कश्मीर और लद्दाख

17. पश्चिम राजस्थान

18. पूर्वी राजस्थान

19. पश्चिम मध्य प्रदेश

20. पूर्वी मध्य प्रदेश

21. गुजरात

22. सौराष्ट्र

23. कोंकण और गोवा

24. मध्य महाराष्ट्र

25. मराठवाड़ा

26. विदर्भ

27. छत्तीसगढ़

28. तटीय आंध्र प्रदेश और यनम

29. तेलंगाना

30. रायलसीमा

31. तमिलनाडु, पुडुचेरी और कराईकल

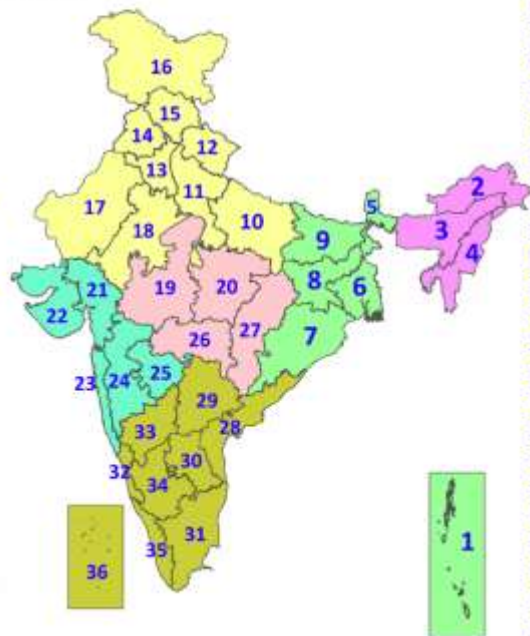
32. तटीय कर्नाटक

33. आंतरिक उत्तरी कर्नाटक

34. आंतरिक दक्षिणी कर्नाटक

35. केरल और माहे

36. लक्षद्वीप



1. Andaman & Nicobar Islands

2. Arunachal Pradesh

3. Assam & Meghalaya

4. Nagaland, Manipur, Mizoram & Tripura

5. Sub-Himalayan West Bengal & Sikkim

6. Gangetic West Bengal

7. Odisha

8. Jharkhand

9. Bihar

10. East Uttar Pradesh

11. West Uttar Pradesh

12. Uttarakhand

13. Haryana, Chandigarh & Delhi

14. Punjab

15. Himachal Pradesh

16. Jammu & Kashmir and Ladakh

17. West Rajasthan

18. East Rajasthan

19. West Madhya Pradesh

20. East Madhya Pradesh

21. Gujarat

22. Saurashtra

23. Konkan & Goa

24. Madhya Maharashtra

25. Marathwada

26. Vidarbha

27. Chhattisgarh

28. Coastal Andhra Pradesh & Yanam

29. Telangana

30. Rayalaseema

31. Tamilnadu, Puducherry & Karaikal

32. Coastal Karnataka

33. North Interior Karnataka

34. South Interior Karnataka

35. Kerala & Mahe

36. Lakshadweep

SPATIAL DISTRIBUTION (% of Stations reporting)

% Stations	Category	% Stations	Category
76-100	Widespread (WS/Most Places)	26-50	Scattered (SCT/A Few Places)
51-75	Fairly Widespread (FWS/Many Places)	1-25	Isolated (ISOL)



Fog



Heavy Snow



Cold Wave



Heavy Rain



Dust Storm



Cold Day



Very Heavy Rain



Heat Wave



Ground Frost



Extremely Heavy Rain



Warm Night



Thunder & Lightning



Hot Day



Hailstorm



Hot & Humid



Dust Raising Winds



Strong Surface Winds

COLOUR CODED WARNING

No Warning (No Action)

Watch (Be Aware)

Alert (Be Prepared To Take Action)

Warning (Take Action)

Probabilistic Forecast

Terms	Probability of Occurrence (%)
Unlikely	< 25
Likely	25 - 50
Very Likely	50 - 75
Most Likely	> 75

* Red colour warning does not mean "Red Alert", Red colour warning means "Take Action".

Forecast and Warning for any day is valid from 0830 hours IST of day till 0830 hours IST of next day.

For more details, kindly visit <https://mausam.imd.gov.in> or contact: 011-2434-4599

(Service to the Nation since 1875)

DEFINITION/CRITERIA

Rain/ Snow *

Heavy: 64.5 to 115.5 mm/cm *
Very Heavy: 115.6 to 204.4 mm/cm *
Extremely Heavy: > 204.4 mm/cm *

Heat Wave

When maximum temperature of a station reaches $\geq 40^{\circ}\text{C}$ for plains and $\geq 30^{\circ}\text{C}$ for hilly regions
(a) Based on Departure from normal

Heat Wave: Maximum Temperature Departure from normal 4.5°C to 6.4°C .

Severe Heat Wave: Maximum Temperature Departure from normal $\geq 6.5^{\circ}\text{C}$

(b). Based on Actual maximum temperature

Heat Wave: When actual maximum temperature $\geq 45^{\circ}\text{C}$.

Severe Heat Wave: When actual maximum temperature $\geq 47^{\circ}\text{C}$.

(c). Criteria for heat wave for coastal stations

When maximum temperature departure is $> 4.5^{\circ}\text{C}$ from normal. Heat Wave may be described provided maximum temperature $\geq 37^{\circ}\text{C}$.

Warm Night

When maximum temperature remains 40°C

Warm Night: When minimum temperature departure 4.5°C to 6.4°C .

Severe Warm Night: When minimum temperature departure $> 6.4^{\circ}\text{C}$.

Cold Wave

When minimum temperature of a station $\leq 10^{\circ}\text{C}$ for plains and $\leq 0^{\circ}\text{C}$ for hilly regions.

(a). Based on departure

Cold Wave: Minimum Temperature Departure from normal -4.5°C to -6.4°C .

Severe Cold Wave: Minimum Temperature Departure from normal $\leq -6.5^{\circ}\text{C}$

(b) Based on actual Minimum Temperature (for Plains only)

Cold Wave: When Minimum Temperature is $\leq 4.0^{\circ}\text{C}$

Severe Cold Wave: When Minimum Temperature is $\leq 2.0^{\circ}\text{C}$

(c) For Coastal Stations

When Minimum Temperature departure is $\leq -4.5^{\circ}\text{C}$ & actual Minimum Temperature is $\leq 15^{\circ}\text{C}$

Cold Day

When minimum temperature of a station $\leq 10^{\circ}\text{C}$ for plains and $\leq 0^{\circ}\text{C}$ for hilly regions

Based on departure

Cold Day: Maximum Temperature Departure from normal -4.5°C to -6.4°C .

Severe Cold Day: Maximum Temperature Departure from normal $\leq -6.5^{\circ}\text{C}$

Fog

Phenomenon of small droplets suspended in air and the horizontal visibility $< 1\text{km}$

Moderate Fog: When the visibility between 500-200 metres

Dense Fog: when the visibility between 50- 200 metres

Very Dense Fog: when the visibility < 50 metres

Thunderstorm

Sudden electrical discharges manifested by a flash of light (Lightning) and a sharp rumbling sound (thunder)

Dust/Sand Storm

An ensemble of particles of dust or sand energetically lifted to great heights by a strong and turbulent wind.

Frost

Ice deposits on ground

Air temperature $\leq 4^{\circ}\text{C}$ (over Plains)

Squall

A strong wind that rises suddenly, lasts for atleast 1 minute.

Moderate: Wind speed 52-61 kmph

Severe: Wind speed 62-67 kmph

Very Severe: Wind speed > 67 kmph

Sea State

Effect of various waves in the sea over specific area

Rough to very rough: Wind speed 41-62 kmph (22-33 knots) & Wave height 2.5-6 metre

High to very high: Wind speed 63-117 kmph (34-63 knots) & Wave height 6-14 metre

Phenomenal: Wind speed > 117 kmph (> 63 knots) & Wave height > 14 metre

Cyclone

Cyclonic Storm: Wind speed 62-87 kmph (34-47 knots)

Severe Cyclonic Storm: Wind speed 88-117 kmph (48-63 knots)

Very Severe Cyclonic Storm: Wind speed 118-165 kmph (64 - 89 knots)

Extremely Severe Cyclonic Storm: Wind speed 166-220 kmph (90 -119 knots)

Super Cyclone Storm: Wind speed > 220 kmph (> 119 knots)

* Red colour warning does not mean "Red Alert", Red colour warning means "Take Action".

Forecast and Warning for any day is valid from 0830 hours IST of day till 0830 hours IST of next day.

For more details, kindly visit <https://mausam.imd.gov.in> or contact: 011-2434-4599

(Service to the Nation since 1875)

Hot and Humid: When maximum temperatures remain 3°C above normal along with the above normal relative humidity.